

# ARIF WORKFORCE SOLUTIONS

## Company Profile

A subsidiary of Lala Arif Traders (SMC-Private) Limited

Empowering projects with skilled manpower and expert resources - locally and globally

KARACHI HQ

PAKISTAN

SAUDI ARABIA

Confidential document - prepared from company profile content provided by the client

# Company Overview

Positioning, footprint and integrated value proposition

Arif Workforce Solutions is positioned as a specialized manpower and resource provisioning company serving construction, energy, industrial and infrastructure clients in Pakistan and international markets.

## What it supplies

Skilled, semi-skilled and unskilled labor, technical professionals, equipment operators and project support teams.

## Where it operates

Local deployments across Pakistan plus overseas placements into the Middle East, Africa, Central Asia and beyond.

## Why it is differentiated

Bundled access to manpower, materials and machinery through the parent-company supply chain.

*Core values: integrity, excellence, reliability, safety first and partnership.*

## Vision

Become Pakistan's premier workforce solutions provider, recognized globally for reliable skilled manpower and comprehensive project resources.

## At a glance

**500+**

Workers

**7+**

Years  
parent-company  
experience

**7**

Major projects

**Karachi**

Headquarters in DHA Phase  
6

**Local + Intl**

Operational scope

## Core promise

Deliver trained, certified and compliant workforce teams with speed, quality and professionalism while investing in skill development to meet global standards.

# Parent-Company Backing and Market Credibility

Arif Workforce Solutions builds on the operating history, project access and logistics depth of Lala Arif Traders.

**2017**

Parent company established

**7+**

Years active

**7**

Major projects completed / ongoing

**20+**

Product categories

## Representative project partnerships

- CSCEC - Peshawar-Karachi Motorway
- Shanghai Electric / SECMC / Engro - Thar Coal Power
- China Railway First Group - Engro Thar Coal
- DHA Construction Company - DHA Multan
- IKAN Engineering Services - Khanewal / Lodhran interchange
- China State Third Engineering - Landfill Project Karachi

## Why this matters for clients

### Supply-chain access

Direct grounding in materials, logistics and project-site realities improves execution readiness.

### Project credibility

Association with major infrastructure and energy programs strengthens buyer confidence.

### Bundled support

Clients can simplify procurement through one group offering materials, machinery and manpower.

# Service Portfolio

Comprehensive manpower and resource services for project execution

## 01 Manpower supply & staffing

Pre-vetted workers for sites, factories, warehouses and installations.

## 02 Technical & professional staffing

Engineers, surveyors, safety officers, inspectors, coordinators and supervisors.

## 03 Equipment operators & drivers

Licensed operators for excavators, cranes, loaders, bulldozers, rollers and transport.

## 04 International labor deployment

Recruitment, documentation, visa processing and overseas placement support.

## 05 Project-based workforce teams

Turnkey labor teams scaled to project phases and delivery milestones.

## 06 Bundled solutions

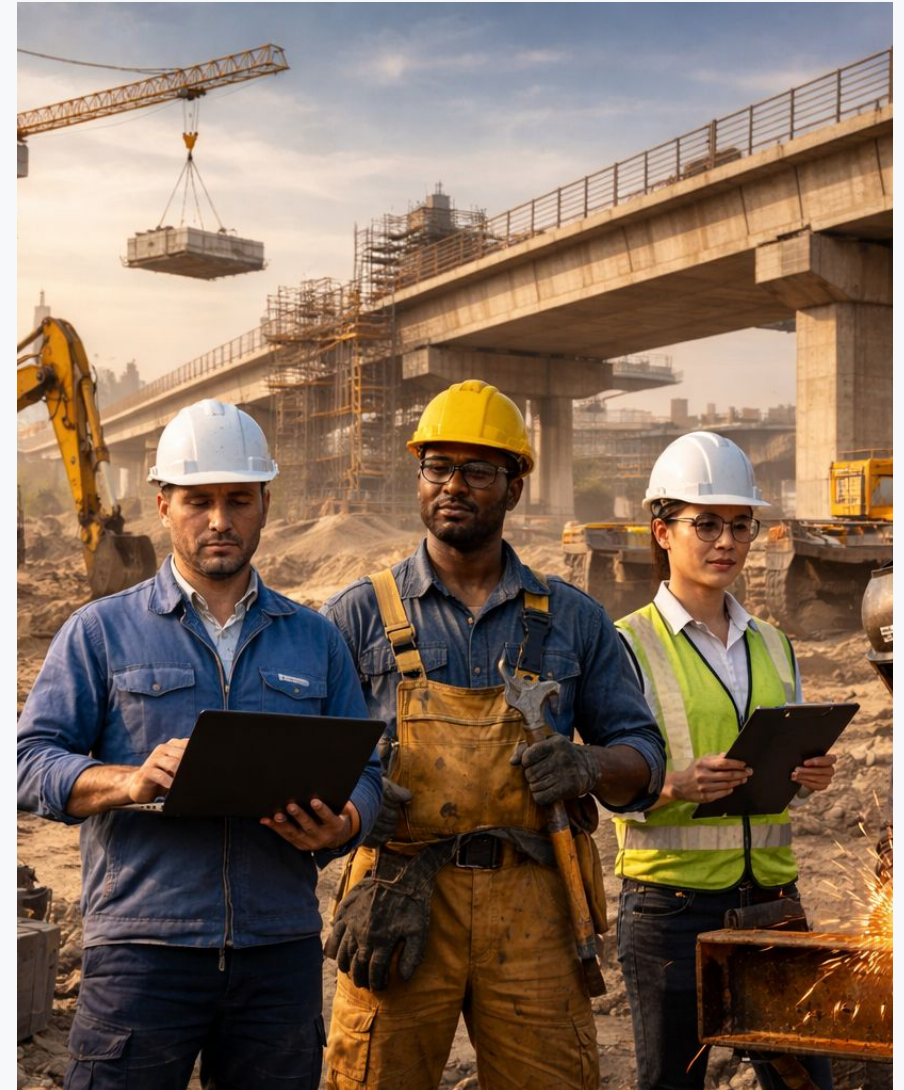
Integrated packages that combine construction materials, machinery and labor.

## 07 Training & skill development

Safety, technical and compliance-focused upskilling through in-house and partner programs.

## 08 Facility management & support staff

Security, housekeeping, camp management, catering and admin support.



# Workforce Categories and Deployment Capabilities



## Deployment ladder

- Skilled labor: masons, carpenters, welders, plumbers, electricians, painters, tilers, steel fixers
- Semi-skilled labor: helpers, scaffolders, pipe fitters, material handlers, riggers
- Unskilled labor: general laborers, site cleaners, loading and unloading crews
- Technical staff: civil, mechanical and electrical engineers, surveyors, drafters, QA/QC inspectors
- Operators: crane, excavator, loader, bulldozer, roller, forklift and truck operators
- Supervisory roles: site supervisors, foremen, project coordinators, HSE officers
- Support staff: security, housekeeping, drivers, camp bosses, admin clerks and cooks

*Local and international deployment capability is highlighted for most skilled, technical, operator, supervisory and support categories.*

## Industries served

Construction & infrastructure

Oil, gas & petrochemical

Energy & power

Mining & minerals

Industrial & manufacturing

Facility management

Telecommunications

# International Operations

Target regions, sector focus and readiness for overseas deployment

## Regional focus

### Middle East

Saudi Arabia, UAE, Qatar, Oman,  
Bahrain, Kuwait  
Construction, oil & gas, infrastructure

### Africa

Libya, Algeria, Nigeria, Kenya, South  
Africa  
Construction, mining, energy

### Central Asia

Kazakhstan, Uzbekistan, Turkmenistan  
Infrastructure, energy, industrial

### Southeast Asia

Malaysia, Indonesia, Brunei  
Construction, manufacturing

### Europe

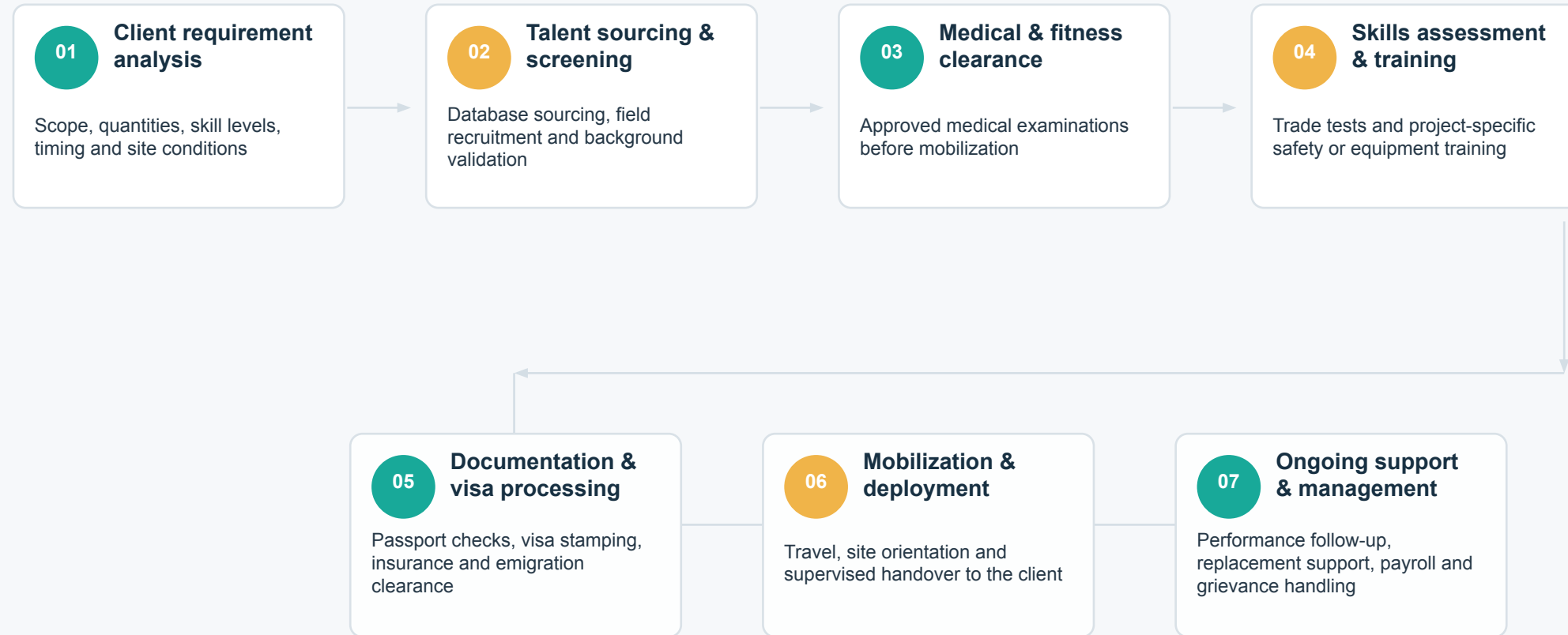
Romania, Poland, Czech Republic  
Construction, industrial staffing

International compliance: BE&OE, Ministry of Overseas Pakistanis and  
host-country labor law alignment.



# Recruitment and Deployment Process

End-to-end workflow from requirement intake to on-site support



The stated operating model combines screening, skills validation, compliance preparation, mobilization and post-deployment support in one managed workflow.

# Health, Safety, Compliance and Differentiators



Zero-tolerance stance on safety violations and alignment to OSHA, ISO 45001 and local requirements are highlighted in the profile.

## HSE and compliance framework

- Mandatory induction and safety orientation for deployed workers
- PPE provision in line with project standards
- Safety audits, toolbox talks and incident reporting protocols
- Emergency response readiness, testing, compensation and insurance coverage

## Why clients may choose Arif Workforce Solutions

- 01 7+ years of parent-company industry presence and mega-project know-how
- 02 Integrated supply chain that can bundle materials, machinery and manpower
- 03 Nationwide recruitment network spanning Punjab, Sindh, KPK and Balochistan
- 04 Rapid mobilization target: 7-14 days local and 21-30 days international
- 05 Multi-stage vetting and dedicated account-management support

# Ready to Support Your Next Project

Professional manpower supply, technical staffing, equipment operators and international deployment support.

Karachi | Multan

Lahore | Islamabad

## Primary contact channels

Phone / WhatsApp +92 3000-222270 | +92 3120-222270

Email [admin@lalatraderson.com](mailto:admin@lalatraderson.com)

Website [www.lalatraderson.com](http://www.lalatraderson.com)

## Office footprint

**Head Office** Muslim Commercial, DHA Phase 6, Karachi, Pakistan

**Regional Office** Muzaffargarh / Multan, Punjab, Pakistan

**Lahore Office** Plot 22, Main Boulevard, Johar Town, Lahore

**Islamabad Office** Office 14, Blue Area, Jinnah Avenue, Islamabad

Banking partner: Habib Bank Limited (HBL)  
Legal registration: SECP incorporated | FBR registered | NTN certified